

Cecilia

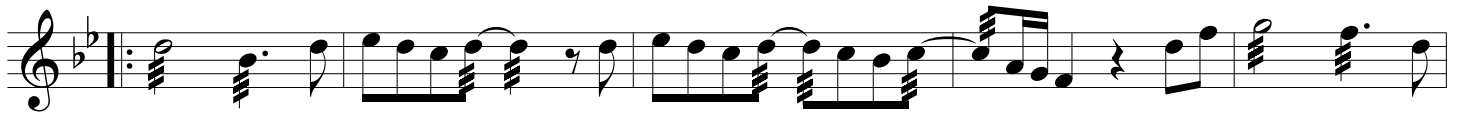
Lead 1

Paul Simon
arr. Mike VanBlaricom

♩ = 110



11



20



28



37



40



Cecilia - Lead 1



Cecilia

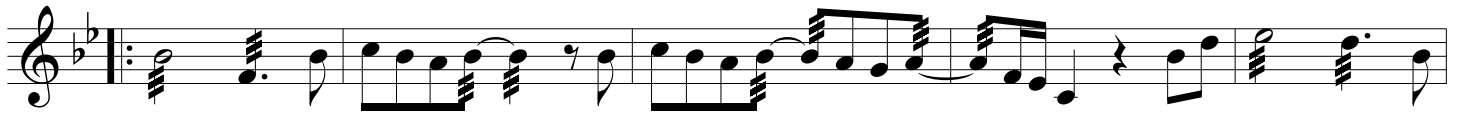
Lead 2

Paul Simon
arr. Mike VanBlaricom

♩ = 110



11



20



28

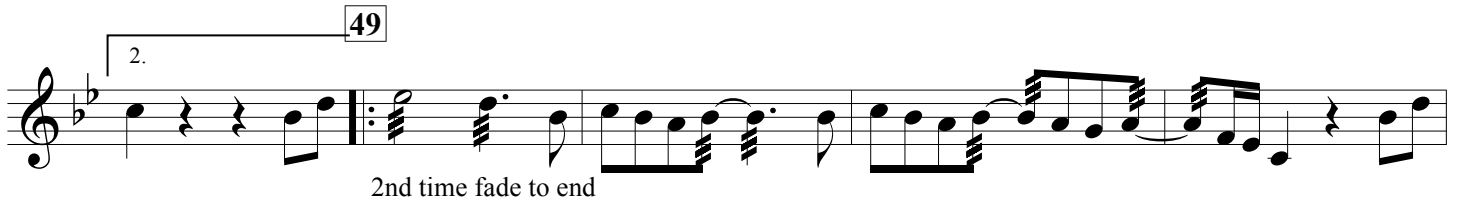
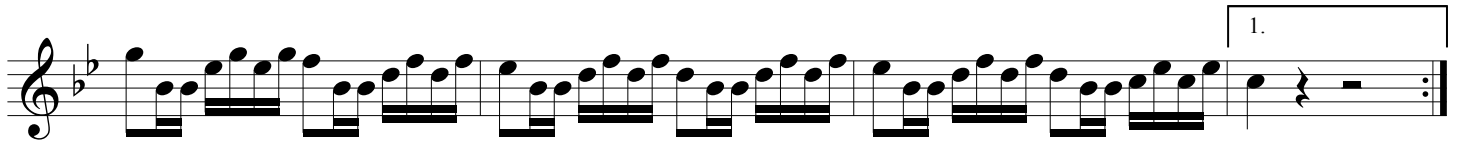


37

40



Cecilia - Lead 2



53



Cecilia

Double 2nd

Paul Simon
arr. Mike VanBlaricom

$\text{♩} = 110$

5



11



20



28





37



40



49



2nd time fade to end

53



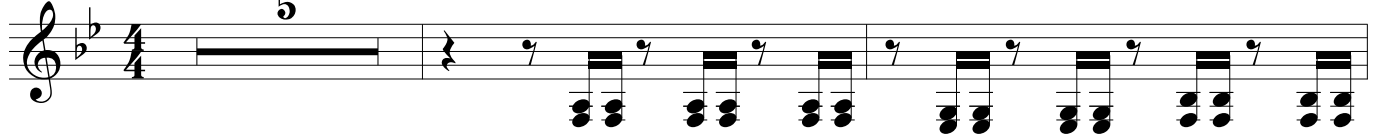
Cecilia

Guitar

Paul Simon
arr. Mike VanBlaricom

$\text{♩} = 110$

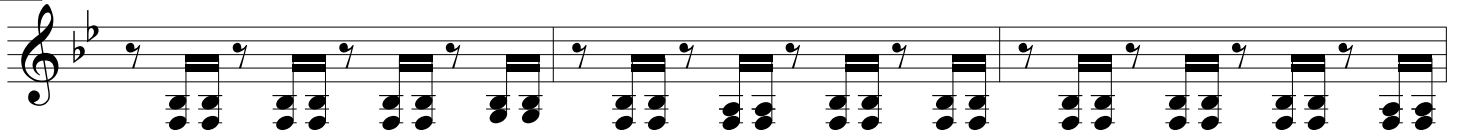
5



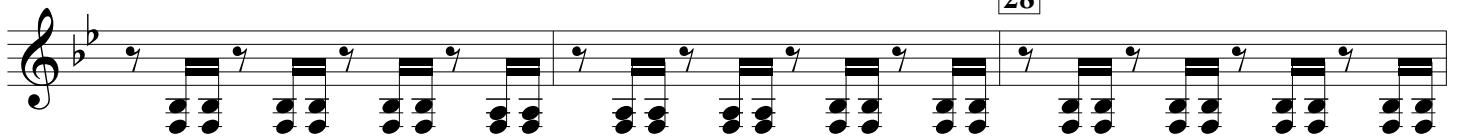
11



20



28



This is a guitar sheet music page for the song 'Cecilia'. It consists of eight staves of music in a single system, all written in treble clef with a key signature of two flats (B-flat and E-flat). The music is primarily composed of chords, with some melodic lines interspersed. Measure numbers 37, 40, 49, and 53 are clearly marked. A first ending bracket labeled '1.' spans measures 47-52, and a second ending bracket labeled '2.' spans measures 49-52. The instruction '2nd time fade to end' is placed below the second ending. The piece concludes with a double bar line and repeat dots at the end of the eighth staff.

Tenor

Cecilia

Paul Simon
arr. Mike VanBlaricom

♩ = 110

5

11

20

28

37 40

1. 2. 49

2nd time fade to end

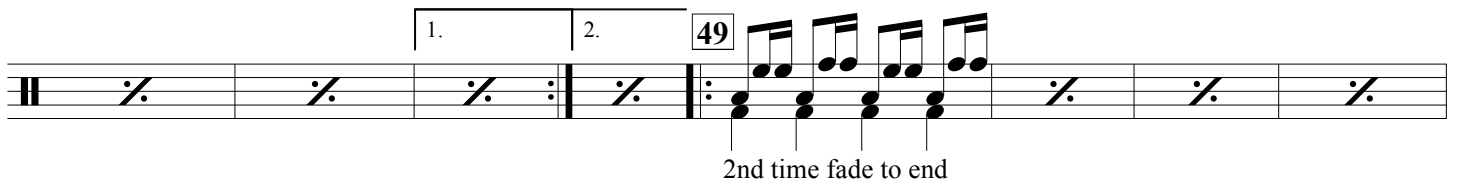
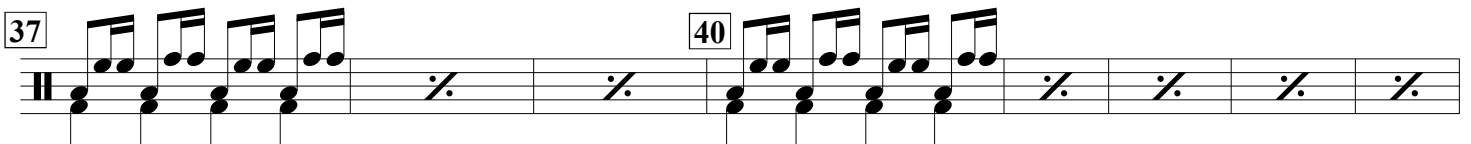
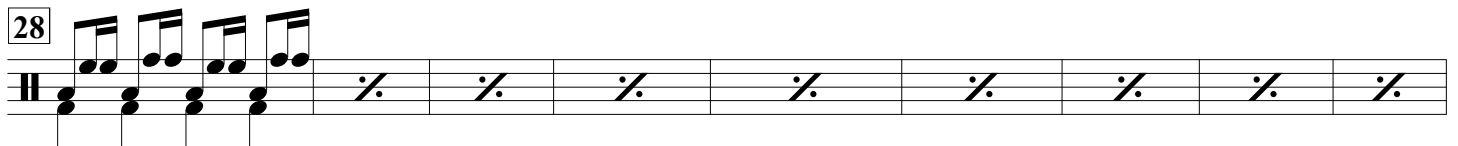
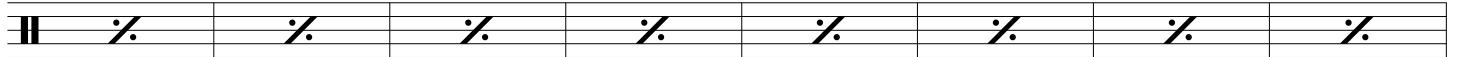
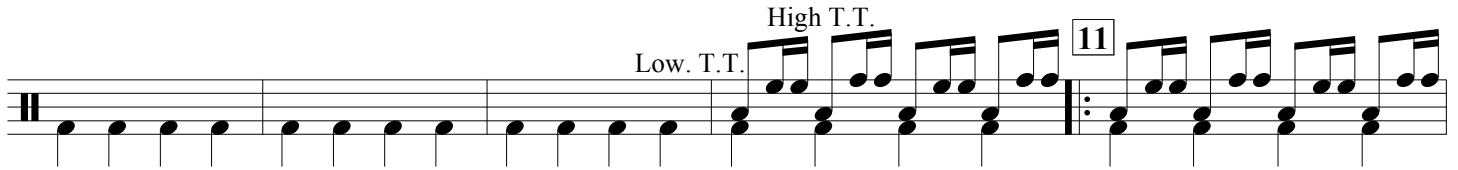
53

Cecilia

Drum Set

Paul Simon
arr. Mike VanBlaricom

♩ = 110



Cecilia

Timbales

Paul Simon
arr. Mike VanBlaricom

$\bullet = 110$ Rim or cowbell

11

20

28

37

40

49

53

2nd time fade to end

Cecilia

Tambourine

Paul Simon
arr. Mike VanBlaricom

♩ = 110

Musical notation for the first line of the tambourine part, starting with a 4/4 time signature and a series of eighth notes with accents.

11

Musical notation for the second line of the tambourine part, starting with a repeat sign and a series of eighth notes with accents.

20

Musical notation for the third line of the tambourine part, starting with a series of eighth notes with accents.

28

Musical notation for the fourth line of the tambourine part, starting with a series of eighth notes with accents.

37

40

Musical notation for the fifth line of the tambourine part, including a first and second ending bracket.

49

53

Musical notation for the sixth line of the tambourine part, ending with a double bar line.

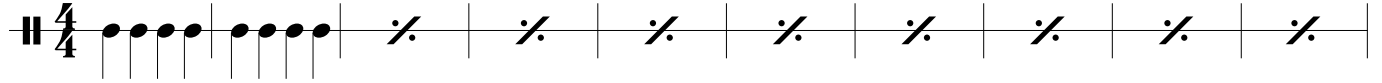
2nd time fade to end

Cecilia

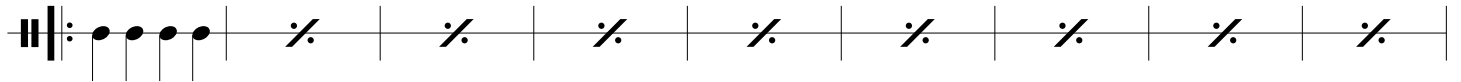
Cowbell

Paul Simon
arr. Mike VanBlaricom

♩ = 110



11

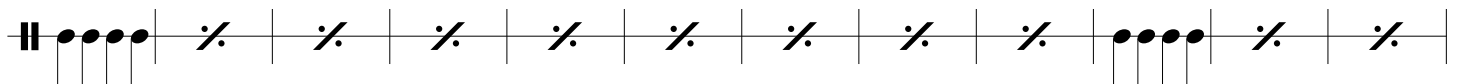


20

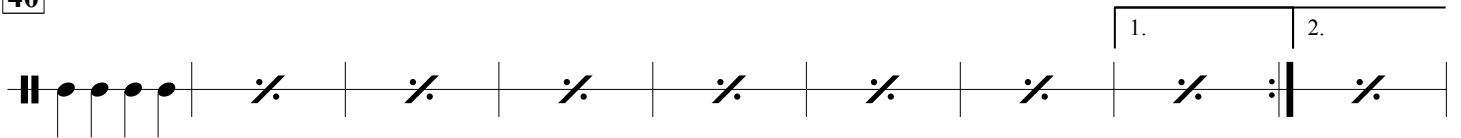


28

37



40



49

53



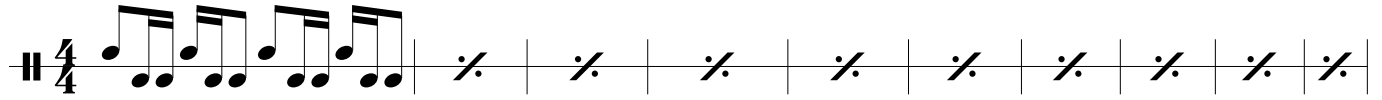
2nd time fade to end

Cecilia

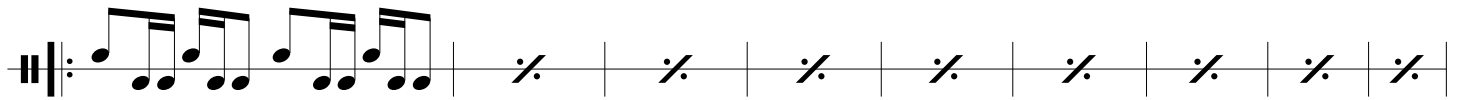
Conga Drums

Paul Simon
arr. Mike VanBlaricom

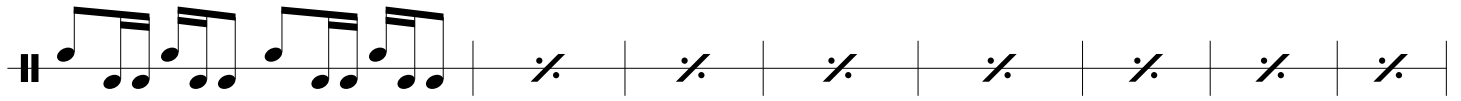
♩ = 110



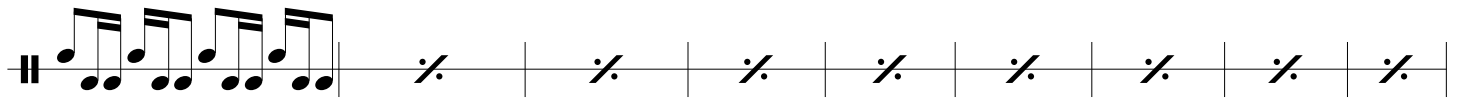
11



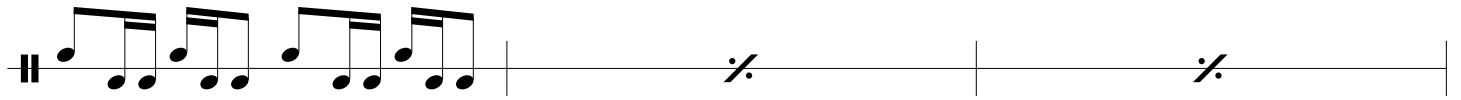
20



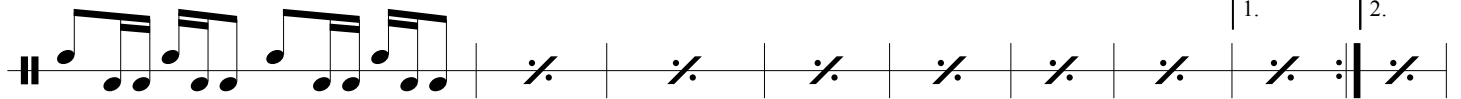
28



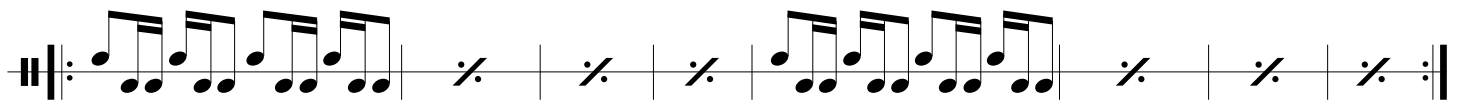
37



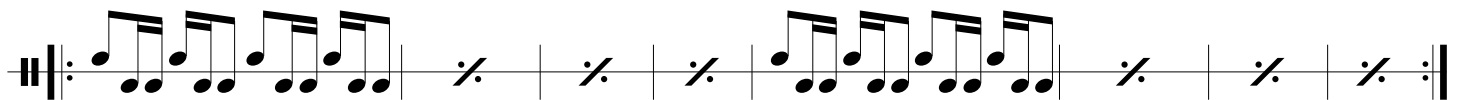
40



49



53



2nd time fade to end

Cecilia

Castanets,
Handle-mounted

Paul Simon
arr. Mike VanBlaricom

♩ = 110

11

20

28

37

40

49

53

2nd time fade to end